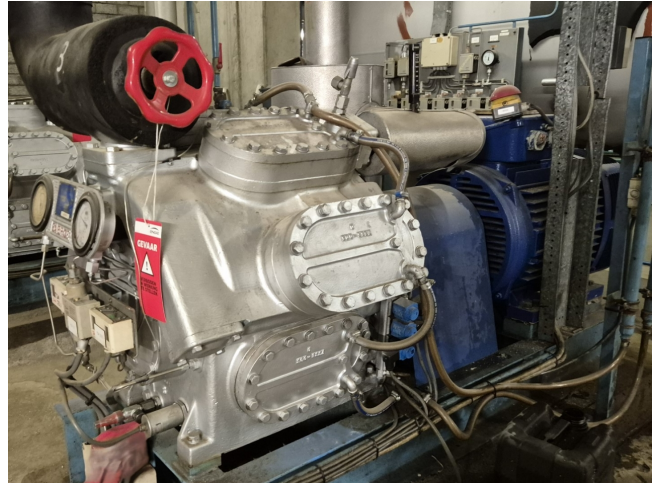


# Sabroe SMC 108L

## Specifications

Brand	Sabroe
Type	SMC 108L
Refrigerant	NH 3 (ammonia)
kW at +10°C/+40°C	724,8
kW at 0°C/+40°C	479,4
kW at -5°C/+40°C	381,5
kW at -10°C/+40°C	298,1
Unloaded Start	✓
Capacity Control	✓
On steel base frame	✓
Pressure safety switches	✓
Hp/Lp/Op	
Pressure gauges	✓
Hp/Lp/Op	
Oil separator	✓
Sight Glass	✓
Solenoid Valve	✓
Remarks	Y.o.b. 1986
Remarks	*Capacity based on R717 (Ammonia).
Sizes	2200x1000x1700 mm (LxWxH)
Stock	1



## Description

### Used Sabroe SMC 108L

Used Sabroe SMC 108L reciprocating compressor on NH3 (Ammonia). Complete with a Leroy Somer P 280 S-4 electric motor - 50 Hz - 110 kW - 1460 RPM, oil separator with a volume of 65 liters, pressure and safety switches/gauges and a sight glass. \*Why choose for HOSBV? We are not only the largest used refrigeration specialist in Europe, but also, we deliver all equipment including an extensive test, warranty and an industrial cleaning. \*Optionally we can also perform a new paint job and arrange the logistics.

